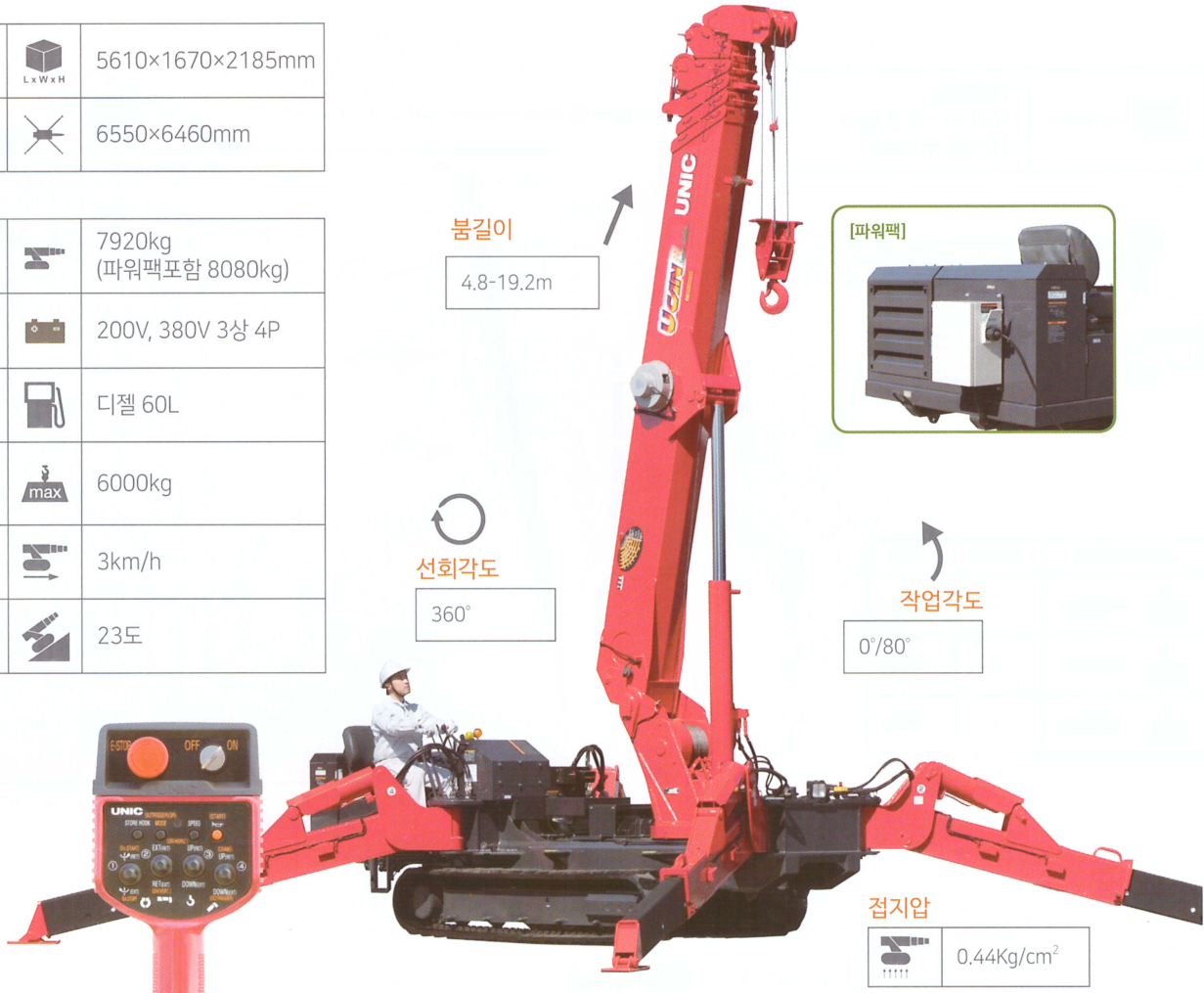


UR-W706C

기술평보

치수	 5610×1670×2185mm
작업 변경	 6550×6460mm

무게	 7920kg (파워팩포함 8080kg)
사용 전원	 200V, 380V 3상 4P
연료	 디젤 60L
최대 안전 하중	 6000kg
속도	 3km/h
특수 기능	 23도

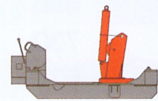


치수

[1800kg]



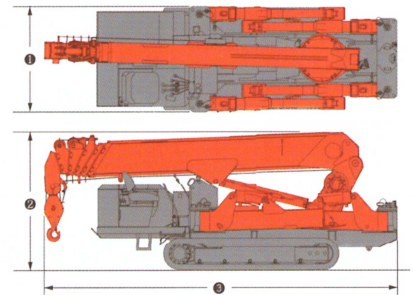
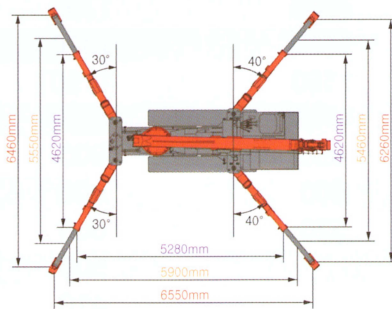
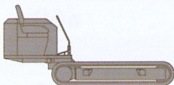
[2640kg]



[1560kg(390kg×4)]



[2200kg]



Crane model	UR-W706C 2
● Total width	1670mm
● Total height	2185mm
● Total length	5610mm
Mass of crane	7920kg (8080kg)

[파워팩]

max 6000kg

5610×1670×2185mm

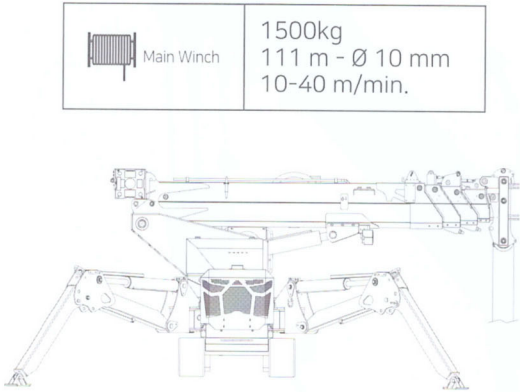
max 25.9m

max 20m

(주)대명거미크레인
SPIDERCRANE.CO.KR

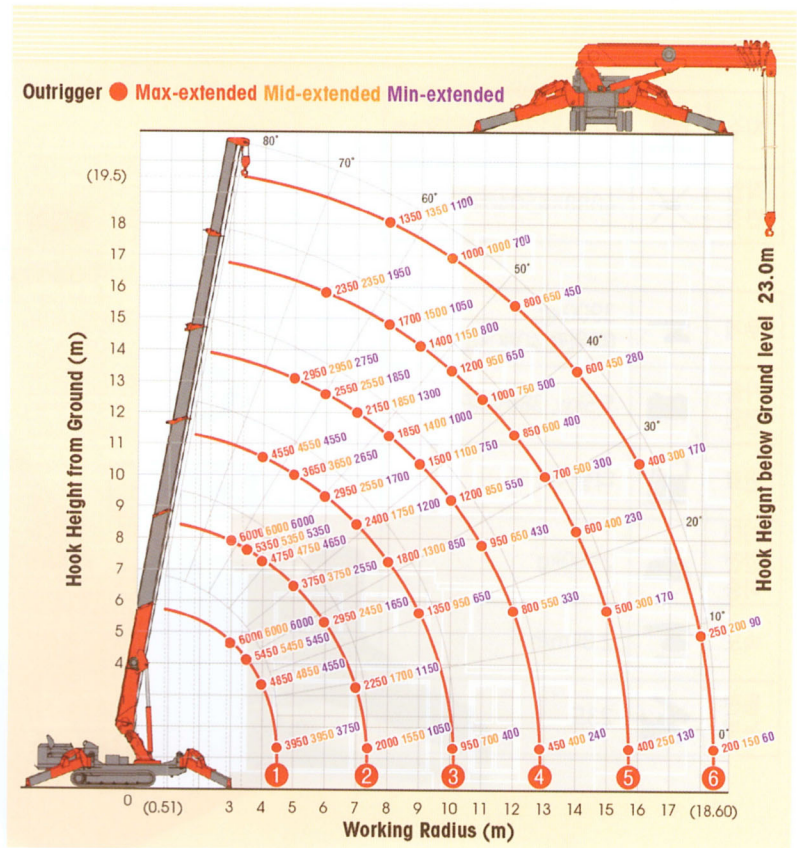
원치&낙하단계

작업제원표



Main Winch
1500kg
111 m - Ø 10 mm
10-40 m/min.

최대허용하중	와이어	미터
max 6000kg	4	-23m
max 3000kg	2	-49m
max 1500kg	1	-100m



작업반경 [m]	boom 길이 [m]					[kg]
	4.8/7.7	10.6	13.5	16.3	19.5	
3	6000	4550				
3.5	5350	4550				
4	4750	4550				
4.3	3950	3950				
5	3750	3650	2950			
6	2550	2950	2950	2350		
7	2250	2400	2150	2150		
8		1800	1850	1700	1350	
9		1350	1500	1400	1300	
10		950	1200	1200	1000	
11			950	1000	800	
12			800	850	800	
12.9			450	700	800	
13				700	800	
14				600	600	
15				500	400	
16					400	
18					250	
18.6					200	